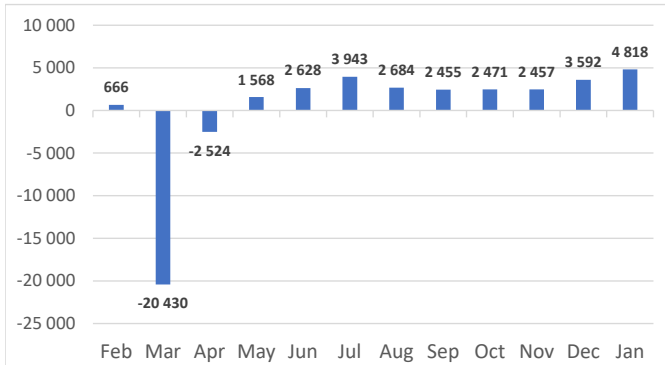


**Net Sales Total**

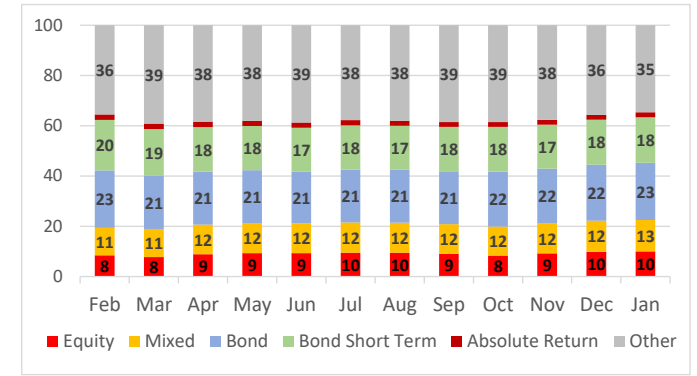


**AUM & Net Sales by Investment Profile**

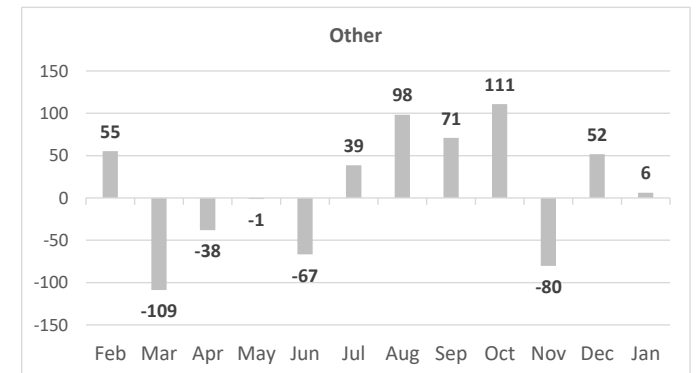
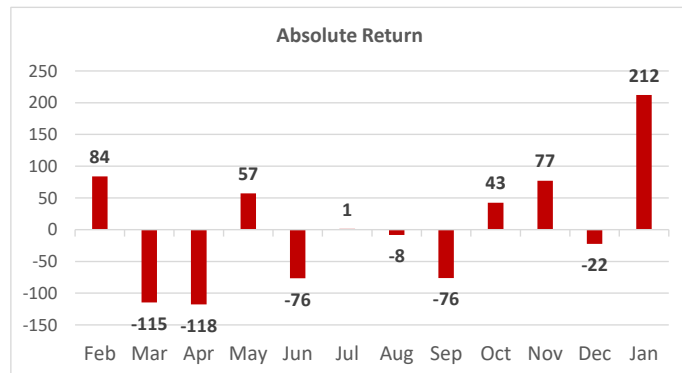
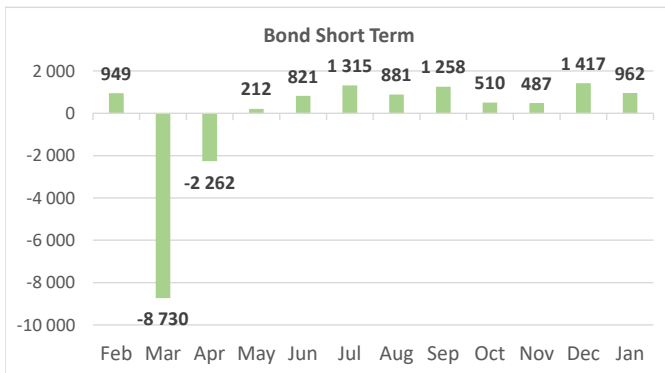
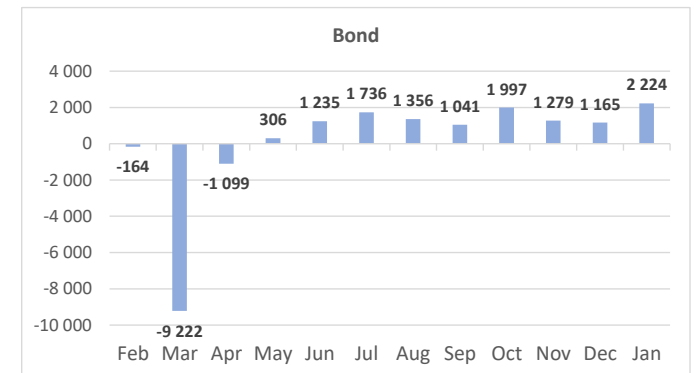
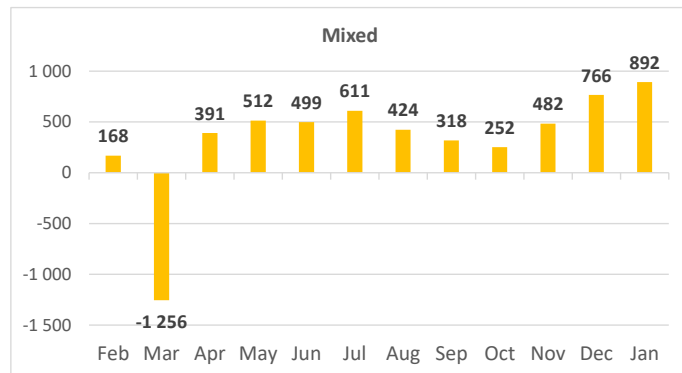
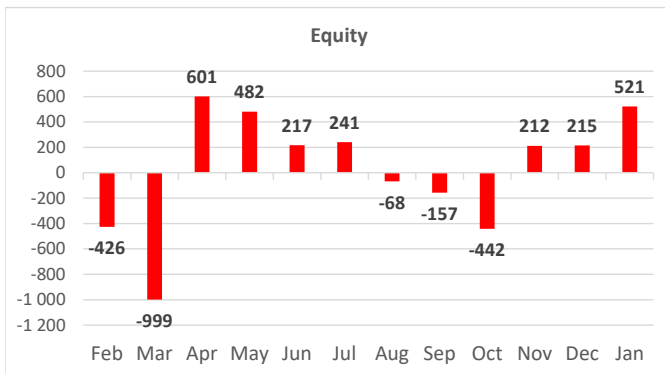
Profile	AUM		Net sales		
	Jan-21	Dec-20	Jan-21	Dec-20	YTD
Equity	28 525	27 721	521	215	521
Mixed	35 767	34 700	892	766	892
Bond	64 936	62 261	2 224	1 165	2 224
Bond Short Term	51 502	50 351	962	1 417	962
Absolute Return	5 679	5 386	212	-22	212
Other	98 944	100 080	6	52	6
<b>Total</b>	<b>285 353</b>	<b>280 500</b>	<b>4 818</b>	<b>3 592</b>	<b>4 818</b>

AUM Structure [%]	Private Eq.	Securitized	Real Estate	Commodity
of Other category	93	5	1	2

**AUM Structure [%]**



**Net Sales by Investment Profile**



Bond Short Term category includes previous Money Market Treasury and Money Market Universal categories. Money Market Corporate data were combined with Bond data  
 All data is presented in PLN mln. Data for Private Equity, Securitized, Real Estate and Commodity are included in the "Other" category  
 This FactSheet has been developed by IZFiA, based on data collected from domestic Investment Funds (approx. 95% of Polish investment fund assets); [www.izfa.pl](http://www.izfa.pl)