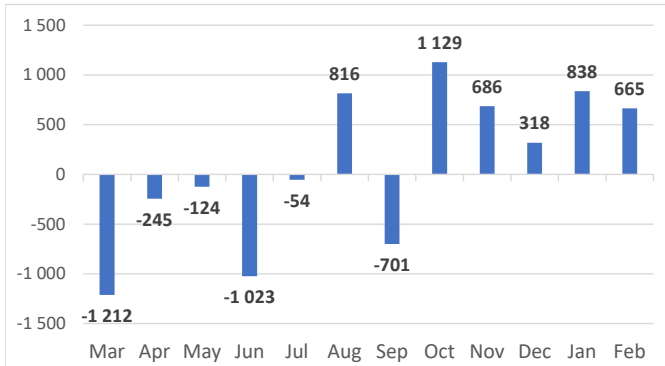


**Net Sales Total**



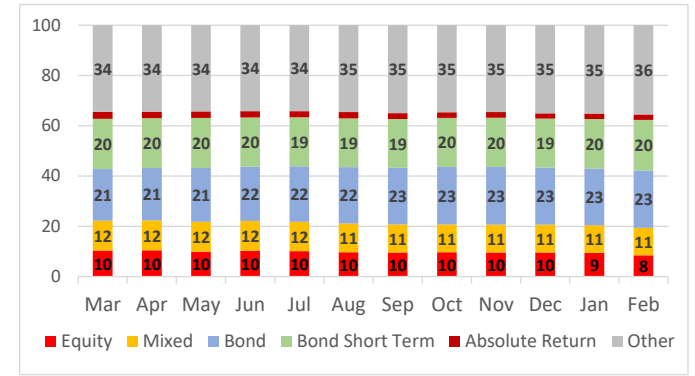
**AUM & Net Sales by Investment Profile**

Profile	AUM		Net sales		
	Feb-20	Jan-20	Feb-20	Jan-20	YTD
Equity	22 630	25 342	-426	-227	-653
Mixed	29 309	29 874	167	303	470
Bond	61 371	61 121	-164	74	-91
Bond Short Term	54 067	53 118	949	730	1 679
Absolute Return	5 694	5 713	84	11	95
Other	95 284	95 055	55	-52	3
<b>Total</b>	<b>268 356</b>	<b>270 224</b>	<b>665</b>	<b>838</b>	<b>1 503</b>

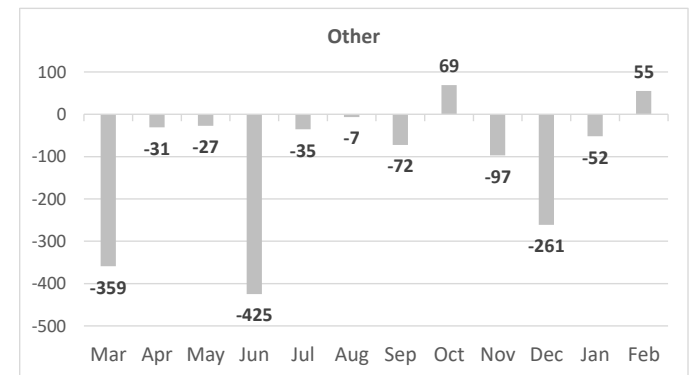
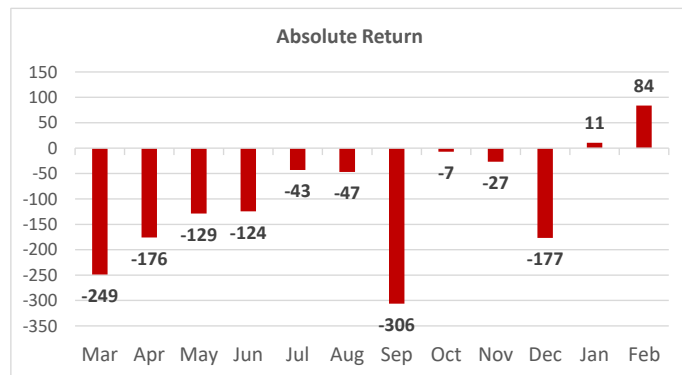
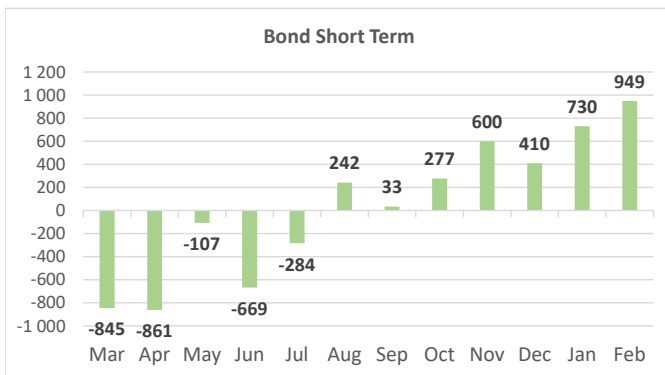
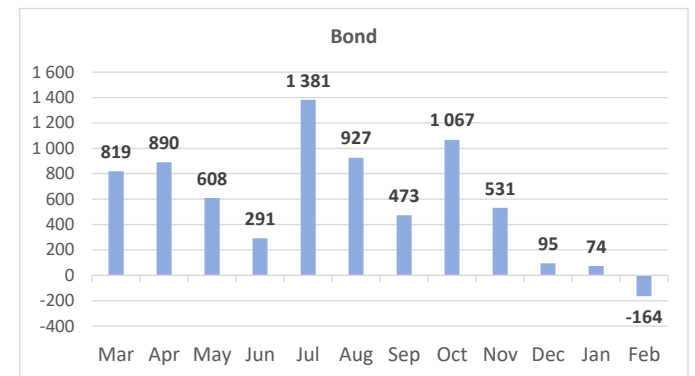
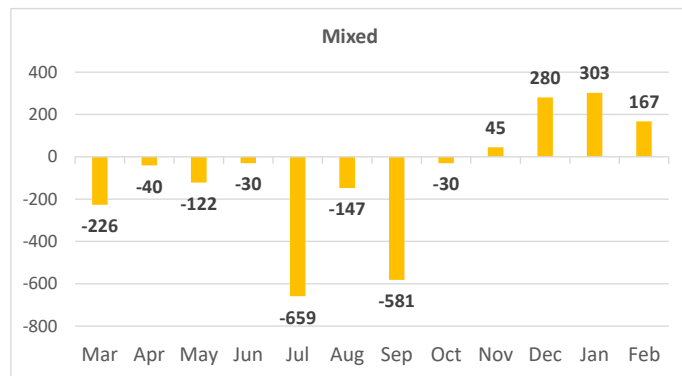
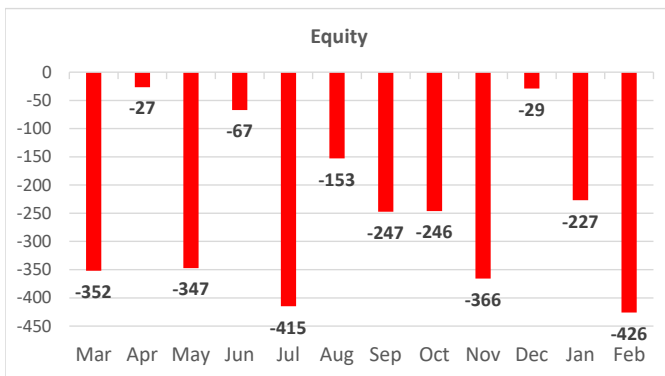
  

AUM Structure [%]	Private Eq.	Securitized	Real Estate	Commodity
of Other category	90	7	2	1

**AUM Structure [%]**



**Net Sales by Investment Profile**



Bond Short Term category includes previous Money Market Treasury and Money Market Universal categories. Money Market Corporate data were combined with Bond data  
 All data is presented in PLN mln. Data for Private Equity, Securitized, Real Estate and Commodity are included in the "Other" category  
 This FactSheet has been developed by IZFiA, based on data collected from domestic Investment Funds (approx. 95% of Polish investment fund assets); www.izfa.pl